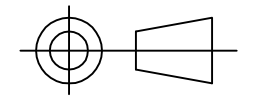


T.P. NO.	FROM	TO	SIZE/RATING
TP1	MAIN FLOW LINE	DUAL VISCOMETER SYSTEM	1" B.W. END
TP2	DUAL VISCOMETER SYSTEM	MAIN FLOW LINE	1" B.W. END
TP3	PURGE/ FLUSH/ CALIBRATION FLUID	MAIN FLOW LINE	1/2" NB 300# FLG.
TP4	PURGE/ FLUSH/ CALIBRATION FLUID	MAIN FLOW LINE	1/2" NB 300# FLG.
TP5	COOLANT SERVICE	HEAT EXCHANGER UNIT	1" B.W. END
TP6	HEAT EXCHANGER UNIT	COOLANT SERVICE	1" B.W. END
TP7	STEAM SERVICE	HEAT EXCHANGER UNIT	1" B.W. END
TP8	HEAT EXCHANGER UNIT	STEAM SERVICE	1" B.W. END

© Solartron ISA 2001
 This document and its contents are the exclusive property of ISA CONTROLS Ltd. and may not be copied, transmitted or communicated without prior permission.
 This document and its contents do not constitute any contractual obligation unless expressly agreed.



SCALE - N.T.S.
 ALL DIMENSIONS IN mm.

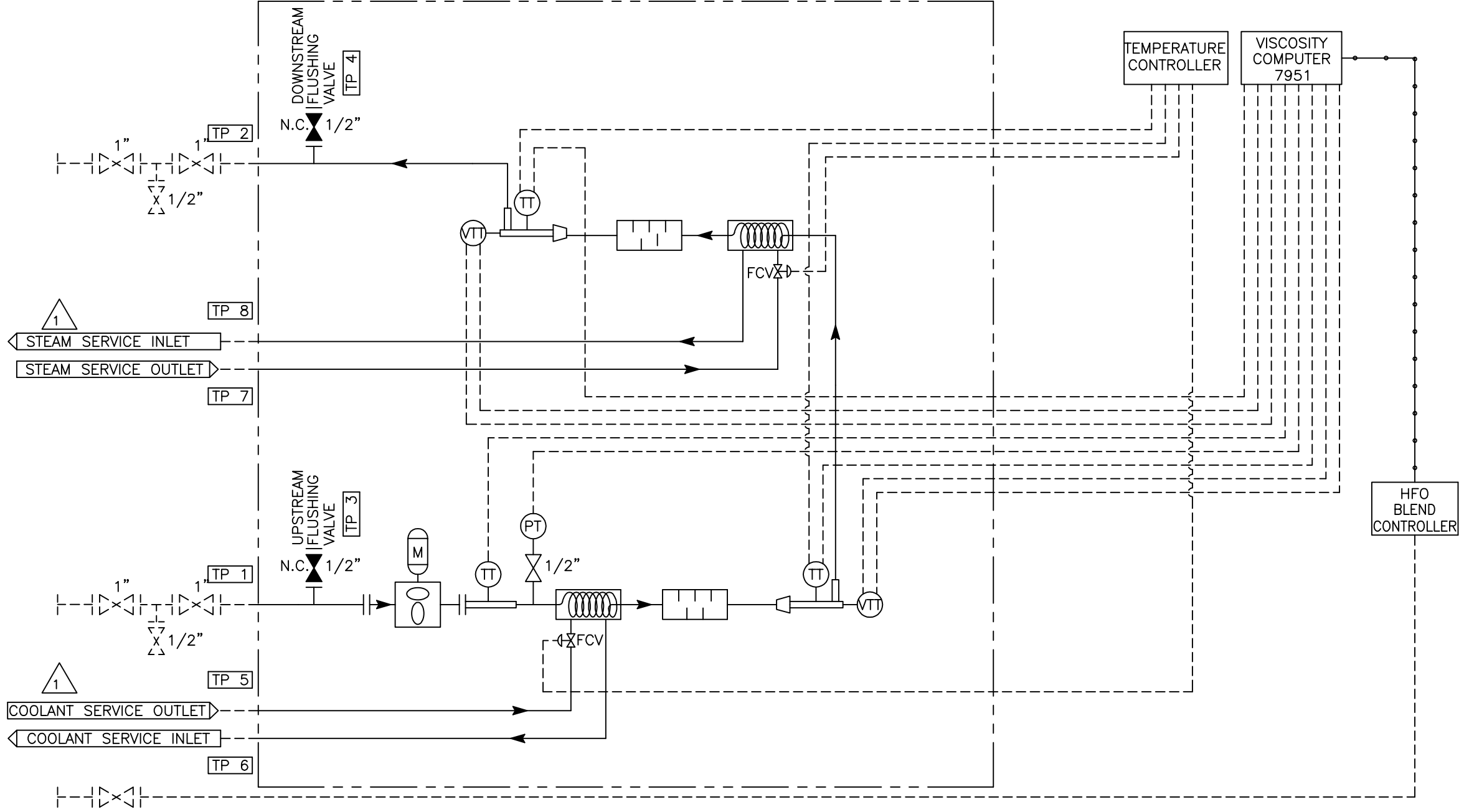
GENERAL NOTES	
ITEM NUMBER	VT-001
SERVICE	
EQUIPMENT TRIM	N/A
CAPACITY	6-30 l/m
CORROSION ALLOWANCE	N/A mm
MATERIAL	A821 T316
DESIGN PRESSURE	16 BAR
DESIGN TEMPERATURE	70-110 °C

1. SKID PIPEWORK TO BE ALL WELDED CONSTRUCTION.

REFERENCE DRGS.
 S/38477B001 - VISCOSITY SKID G/A

- SKID LIMITS
- MAIN LINE
- INSTRUMENT LINE
- ELECTRICAL SIGNAL LINES
- SERIAL LINK LINES
- BALL VALVE
- NEEDLE VALVE
- ◇ FLOW CONTROL VALVE
- ⊞ HEAT EXCHANGER
- ▭ STATIC MIXER
- ▷ CONCENTRIC REDUCER
- ⊞ POSITIVE DISPLACEMENT PUMP
- ◇ FLOW CONTROL VALVE
- ⊞ VISCOSITY ANALYSER

DUAL VISCOSITY SKID CONTROL ROOM



TOLERANCES EXCEPT WHERE OTHERWISE STATED
 ±1mm ON MACHINED ITEMS ±6mm ON FABRICATED ITEMS



Solartron ISA
 Hackworth Industrial Park,
 Shildon, Co. Durham DL4 1LH
 Tel.01388 773065 Fax.01388 774888
 WebSite-http://www.isa-controls.com

Rev No.	Modification	Drawn By	Date	Chkd	Date
1	HEATER/COOLER REVERSED	D.EASBY	15/11/01		
0	ISSUED FOR APPROVAL	D.EASBY	18/10/01	N.FENWICK	18/10/01

ISA Job No.	38477
Client	VS PRODUCT
Client P.O. No.	VS/66/01SOL/ISA

Title	
DUAL VISCOMETER SYSTEM WITH SELF CALIBRATING EQUATION	
Drg No. S/38477A002	Rev. 1